

GB

**SIROFLEX<sup>®</sup>**



To better understand why this company has become so popular in the field of household items, both at national and international level, one should go as far back as 1963.

Moving its first steps in the field of hydraulic devices and accessories for the installation of washing machines and dishwashers, Siroflex developed that range of items which sees at its top the first plastic quick connector for domestic use.

From then on, thanks to technological progress and product diversification, the dual concept "House & Garden" came into being and developed in close relation to the Siroflex brand, considered as a guarantee of quality.

The target is to combine a new philosophy of gardening as a hobby with that wide range of household items going under the name of Blue Line. This includes the unique aerator-shower which has become world wide leader.

The company's tendency to always have as primary goal the user's actual needs finds its fulfilment in the Blue Line, a true answer to a vast array of domestic problems.

From Aerator-showers to Hair-wash Showers, from Shower Heads to Quick Connectors, from Water Filters and Softeners for drinkable water to the new line "Household Gadgets". Customers can always benefit from the company's experience and competence, as well as enjoying simple, affordable and successful solutions.



# INDEX



## Aerator-showers

from page **4** to page **13**



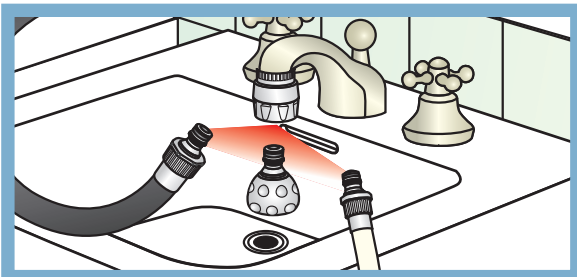
## Hand-showers

from page **14** to page **17**



## Shower heads

page **18**



## Quick connectors

page **19**



## Universal water filters UNI 3

from page **20** to page **21**



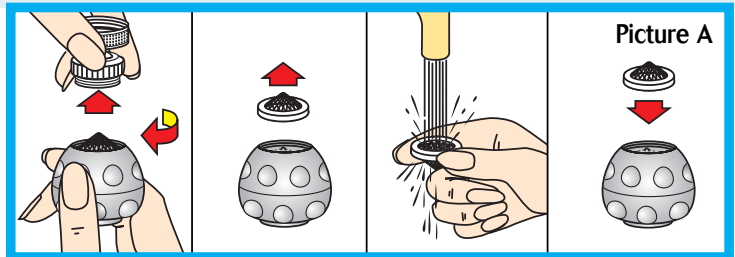
## Household gadgets

from page **22** to page **23**



## “Aerator” 2002 Model

The new 2002 design is an updated version of the original model which still retains all the features incorporated in the former design. It offers a soft flow eliminating the annoying splash caused by high water pressure and incorporates the wire gauze filter which if cleaned periodically will ensure maximum efficiency (Picture A).

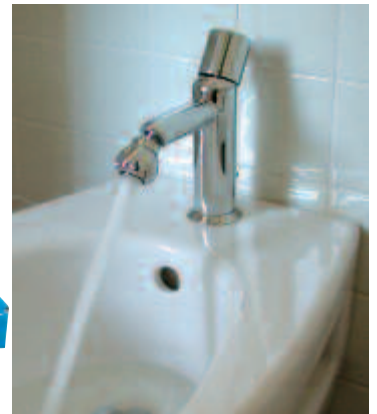


### “Aerator” for threaded taps



**Ref. 2280/S**  
chromed aerator  
22x1M female  
with adapter  
22x1M male  
24x1M male

blister pack



**Ref. 2280**  
n° 32 pcs. - chromed  
in counter display box

particularly suitable  
for the bidet

### “Aerator” with double swivel (patented) for threaded taps

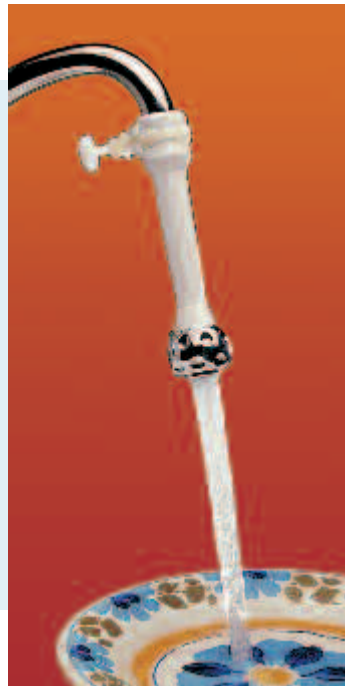
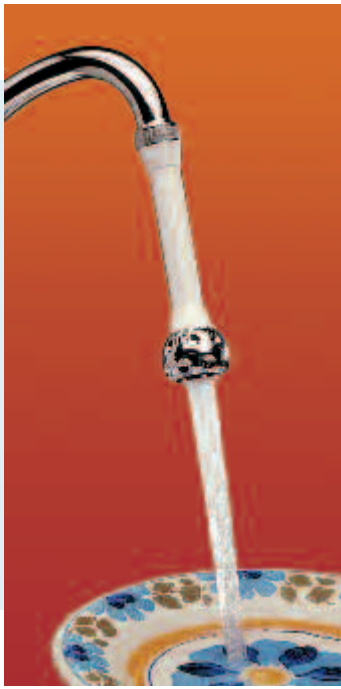


Thanks to the double swivel these aerators are very functional  
- large field of action  
- soft to handle  
- more handy

**Ref. 2285/5S**  
chromed aerator  
22x1M female  
with adapter  
22x1M male  
24x1M male

Blister pack





### Long "Aerators" for smooth taps

These aerators are suitable for round taps up to 20 mm. in diameter, there is a reducer to enable them to fit smaller taps. A special "Siroflex" hose clamp ensures a snug leak-free fit.



**Ref. 2290/S**  
15 cm.  
chromed aerator

**Ref. 2290/1S**  
15 cm.  
red aerator

blister pack

### "Aerator" with swivel for smooth taps

This aerator which fits on to the outside of round taps, incorporates a swivel which allows the aerator to turn thus giving maximum versatility in a minimal space.

**Ref. 2290/3S**  
8,5 cm.  
chromed aerator

blister pack



### Long "Aerators" for threaded taps



**Ref. 2293/S**  
14 cm.  
white  
22x1M female thread  
chromed aerator

**Ref. 2296/S**  
14 cm.  
model extra  
22x1M female thread  
chromed aerator

Provided with water saving membrane (to be placed under the screen washer) which guarantees a saving up to 40%

blister pack



## "Aerator-showers"

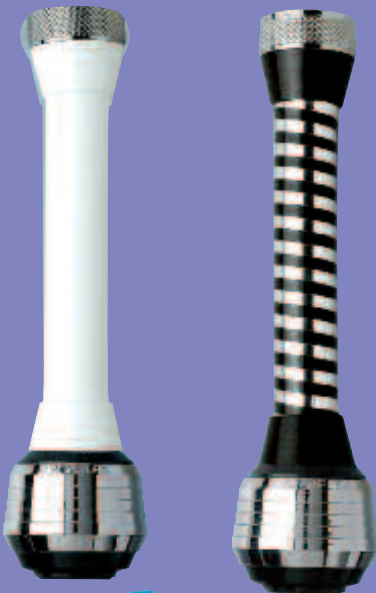
These aerator-showers combine both the soft anti-splash flow and a light shower. The two different flows are obtained by simply moving the outer collar in an upward or downward movement. These models also incorporate the wire gauze filter for ease of cleaning (Picture B). Siroflex aerator-showers remarkably save water too.

### "Aerator-shower" for threaded taps



**Ref. 2780/S**  
chromed aerator-shower  
22x1M female  
with adapter  
22x1M male  
24x1M male  
blister pack

### Long "Aerator-showers" for threaded taps



**Ref. 2793/S** - white  
22x1M female - 14 cm.  
black/chromed aerator-shower

**Ref. 2793/1S** - black  
22x1M female - 14 cm.  
black/chromed aerator-shower

**Ref. 2796/S** - model extra  
22x1M female - 14 cm.  
black/chromed aerator shower

Provided with water saving membrane (to be placed under the screen washer) which guarantees a saving up to 40%

blister pack



### "Aerator-shower" with swivel for threaded taps



These models fit onto the inside and outside of threaded taps and incorporate a swivel for ease of movement and versatility.

**Ref. 2788/S**  
24x1M male thread brass  
black/chromed  
aerator-shower  
**Ref. 2789/S**  
with brass adapters  
22x1M - 1/2" - 3/8"  
female threads  
black/chromed  
aerator-shower  
blister pack

### "Aerator-shower" with swivel for smooth taps

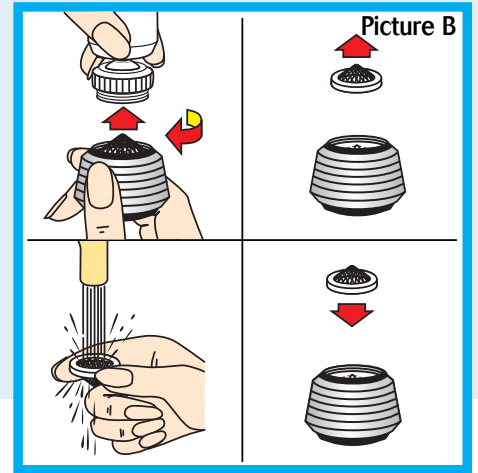


Thanks to the swivel these aerator-showers are very functional

- minimal space requirement
- soft to handle
- calibrate turning

**Ref. 2790/3S**  
9 cm.  
chromed aerator-shower

blister pack



### Long "Aerator-showers" for smooth taps

These aerator-showers can be fitted on to taps of 20 mm. or less with the aid of a reducer. A special "Siroflex" hose clamp ensures a snug leak-free fit.

### Double long "Aerator-shower" for two-taps sink or basin

This model allows two single round taps to be joined together. It is designed for smooth taps upto 20 mm. in diameter and is supplied with two reducers.

Ref. 2799/S chromed aerator-shower blister pack



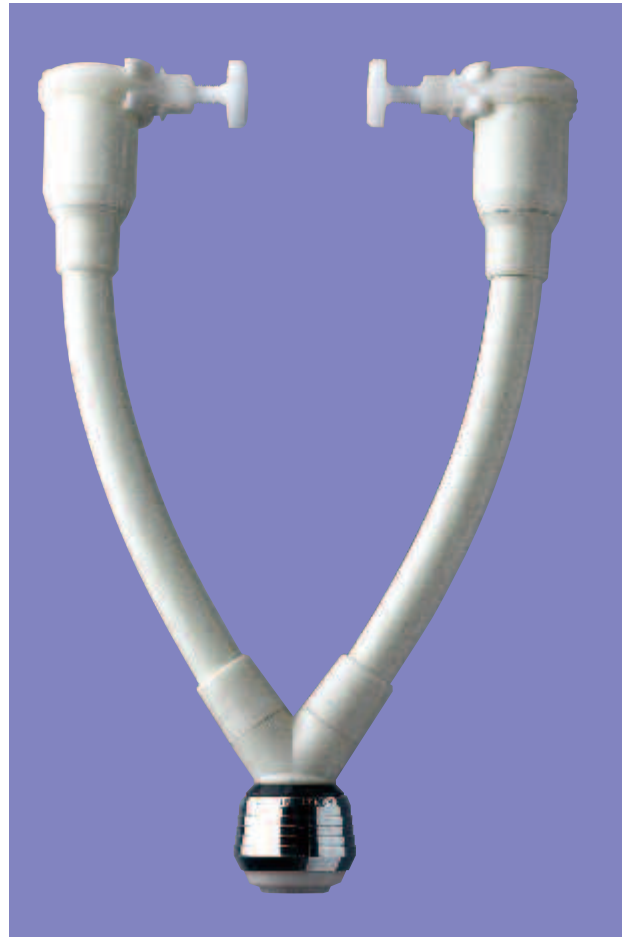
**Ref. 2790/S**  
15 cm.  
chromed  
aerator-shower

**Ref. 2790/1S**  
15 cm.  
red aerator-shower

**Ref. 2790/2S**  
7,5 cm.  
chromed  
aerator-shower

**Ref. 2790/6S**  
7,5 cm.  
red aerator-shower

blister pack





## “Aerator-Shower” with swivel for threaded taps

- coloured models
- with 22x1M male - 24x1M male adapter
- blister pack



brass swivel

- |                      |                                |                |
|----------------------|--------------------------------|----------------|
| <b>Ref. 2485/S</b>   | - black/chromed aerator-shower |                |
| <b>Ref. 2485/0S</b>  | - white/chromed aerator-shower |                |
| <b>Ref. 2485/1S</b>  | - black aerator-shower         |                |
| <b>Ref. 2485/11S</b> | - white aerator-shower         |                |
| <b>Ref. 2485/12S</b> | - yellow aerator-shower        | (discontinued) |
| <b>Ref. 2485/14S</b> | - green aerator-shower         | (discontinued) |
| <b>Ref. 2485/15S</b> | - blue aerator-shower          | (discontinued) |
| <b>Ref. 2485/16S</b> | - brown aerator-shower         | (discontinued) |
| <b>Ref. 2485/17S</b> | - light blue aerator-shower    | (discontinued) |
| <b>Ref. 2485/18S</b> | - red aerator-shower           | (discontinued) |



plastic swivel

- |                      |                                |                |
|----------------------|--------------------------------|----------------|
| <b>Ref. 2485/2S</b>  | - black/chromed aerator-shower |                |
| <b>Ref. 2485/20S</b> | - white/chromed aerator-shower |                |
| <b>Ref. 2485/02S</b> | - black aerator-shower         |                |
| <b>Ref. 2485/21S</b> | - white aerator-shower         |                |
| <b>Ref. 2485/22S</b> | - yellow aerator-shower        | (discontinued) |
| <b>Ref. 2485/24S</b> | - green aerator-shower         | (discontinued) |
| <b>Ref. 2485/25S</b> | - blue aerator-shower          | (discontinued) |
| <b>Ref. 2485/26S</b> | - brown aerator-shower         | (discontinued) |
| <b>Ref. 2485/27S</b> | - light blue aerator-shower    | (discontinued) |
| <b>Ref. 2485/28S</b> | - red aerator-shower           | (discontinued) |



brass swivel

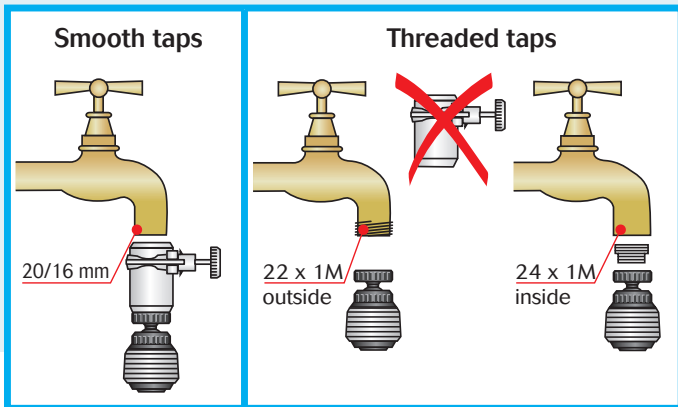
with sink strainer of the same colour

- |                      |                                |                |
|----------------------|--------------------------------|----------------|
| <b>Ref. 2485/3S</b>  | - black/chromed aerator-shower |                |
| <b>Ref. 2485/30S</b> | - white/chromed aerator-shower |                |
| <b>Ref. 2485/03S</b> | - black aerator-shower         | (discontinued) |
| <b>Ref. 2485/31S</b> | - white aerator-shower         |                |
| <b>Ref. 2485/32S</b> | - yellow aerator-shower        | (discontinued) |
| <b>Ref. 2485/34S</b> | - green aerator-shower         | (discontinued) |
| <b>Ref. 2485/35S</b> | - blue aerator-shower          | (discontinued) |
| <b>Ref. 2485/36S</b> | - brown aerator-shower         | (discontinued) |
| <b>Ref. 2485/37S</b> | - light blue aerator-shower    | (discontinued) |
| <b>Ref. 2485/38S</b> | - red aerator-shower           | (discontinued) |

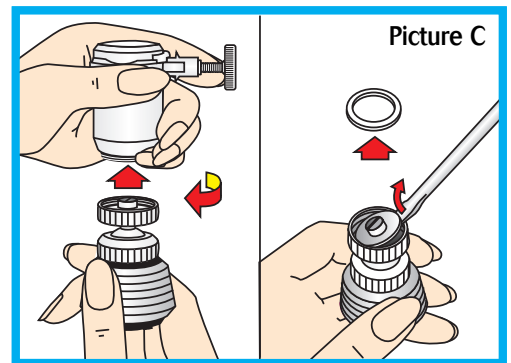


# Universal "Aerator-Shower" with swivel and water-saver

This model is supplied with all the necessary components to fit either threaded or smooth taps. It is equipped with an optional water saver which guarantees a 50% water saving (Picture C).



**Ref. 2790/9**  
24 pcs. black/chromed  
in counter display box



**Ref. 2790/9S**  
black/chromed  
blister pack



**Ref. 2790/90**  
24 pcs. white/chromed  
in counter display box



**Ref. 2790/90S**  
white/chromed  
blister pack



## "Aerator-Shower" with double swivel

(patented)

This model is the top of the range offering the maximum versatility incorporating a 360° swivel action, anti-splash soft flow, shower and wire gauze filter for ease of cleaning.



Ref. 2936/1 display for Ref. 2485/5 and series



10 colours for 22x1M male and 24x1M female threads - blister pack

- Ref. 2485/5S - black/chromed aerator-shower
- Ref. 2485/50S - white/chromed aerator-shower
- Ref. 2485/51S - white aerator-shower
- Ref. 2485/52S - yellow aerator-shower (discontinued)
- Ref. 2485/54S - green aerator-shower (discontinued)
- Ref. 2485/55S - blue aerator-shower (discontinued)
- Ref. 2485/56S - brown aerator-shower (discontinued)
- Ref. 2485/57S - light blue aerator-shower (discontinued)
- Ref. 2485/58S - red aerator-shower (discontinued)



with sink strainer of the same colour

- Ref. 2485/7S - black/chromed aerator-shower
- Ref. 2485/70S - white/chromed aerator-shower
- Ref. 2485/71S - white aerator-shower
- Ref. 2485/72S - yellow aerator-shower (discontinued)
- Ref. 2485/74S - green aerator-shower (discontinued)
- Ref. 2485/75S - blue aerator-shower (discontinued)
- Ref. 2485/76S - brown aerator-shower (discontinued)
- Ref. 2485/77S - light blue aerator-shower (discontinued)
- Ref. 2485/78S - red aerator-shower (discontinued)



# “Deluxe” Aerator-Shower with double swivel (patented)

This model incorporates all the functions and benefits of the previous model but with a more modern and unique design.



Ref. 2585/5S  
black/chromed



Ref. 2585/50S  
white/chromed



Ref. 2585/53S  
black/chromed/black



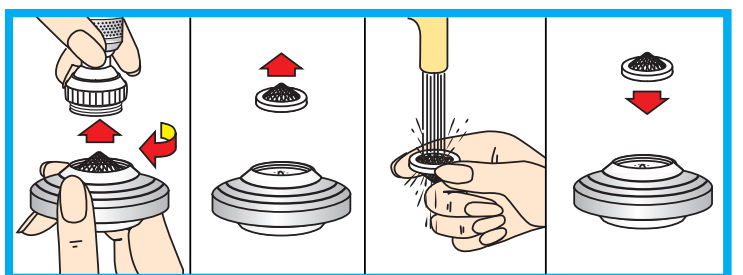
Ref. 2585/56S  
white/chromed/white



4 models for 22x1M male  
and 24x1M female threads  
blister pack



Ref. 2936/2 display  
for Ref. 2585/5 and series





## “Aerator-Shower” 10 cm. with brass swivel and water saver

- it can be fitted to the taps with outer thread 22x1M, inner 24x1M
- it is equipped with a water-saver which guarantees a saving up to 50%
- it is easily handled

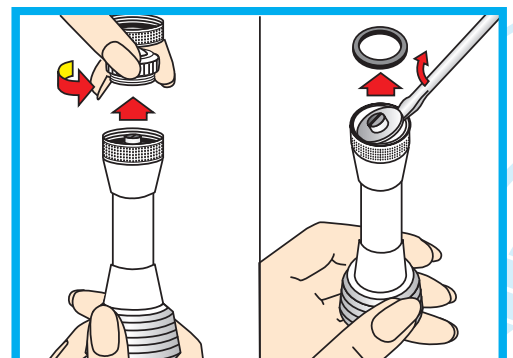


10 colours  
blister pack

- |                      |                                |                |
|----------------------|--------------------------------|----------------|
| <b>Ref. 2493/5S</b>  | - black/chromed aerator-shower |                |
| <b>Ref. 2493/50S</b> | - white/chromed aerator-shower |                |
| <b>Ref. 2493/51S</b> | - white aerator-shower         |                |
| <b>Ref. 2493/52S</b> | - yellow aerator-shower        | (discontinued) |
| <b>Ref. 2493/54S</b> | - green aerator-shower         | (discontinued) |
| <b>Ref. 2493/55S</b> | - blue aerator-shower          | (discontinued) |
| <b>Ref. 2493/56S</b> | - brown aerator-shower         | (discontinued) |
| <b>Ref. 2493/57S</b> | - light blue aerator-shower    | (discontinued) |
| <b>Ref. 2493/58S</b> | - red aerator-shower           | (discontinued) |



if you wish to obtain the standard water flow again, the water-saver can be taken out.



**Ref. 2936**  
display for  
Ref. 2493/5 and series

# "Aerator-Shower" in special packaging

Counter display box



with brass swivel for taps with 22x1M male thread

**Ref. 2785/10**  
32 pcs.  
8 colours

Counter display box



with brass swivel for taps with 22x1M male thread

**Ref. 2785**  
32 pcs. black/chromed  
**Ref. 2785/0**  
32 pcs. white/chromed

Counter display box



with swivel for  
smooth taps

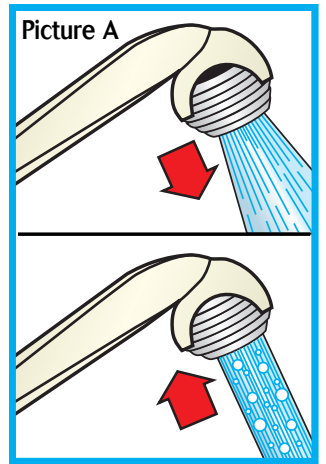
**Ref. 2790/30**  
9 cm. - 24 pcs.  
6 colours  
**(discontinued)**





## Nuova Micronette Hair-wash Shower

This hand held shower offers two functions, a traditional light shower or an aerated soft flow ideal for rinsing. The two different flows are obtained by simply pulling the outer collar in an upward or downward movement. (Picture A) A special device fitted to the shower prevents the hose from twisting.



**Hair-wash shower (head only)**  
with 1/2" male connection - blister pack

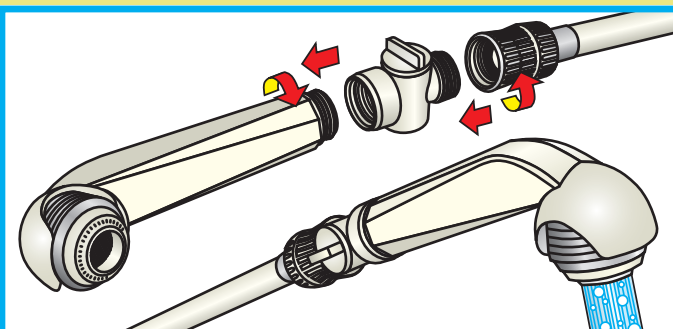
This product comes complete with support for hanging after use. It can be used as a substitute for an existing shower head and will fit existing hoses.

**Ref. 2755/S** - black  
**Ref. 2755/2S** - white

**Ref. 2775** - black  
1/2" female x 1/2" male

**Ref. 2776** - white  
1/2" female x 1/2" male

### Shut off valves with partial closure



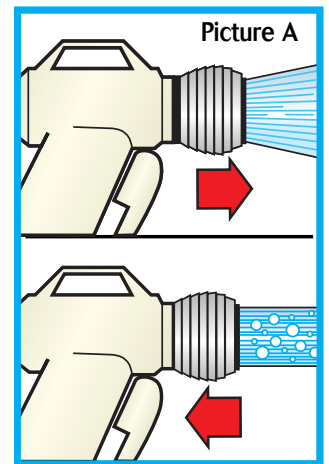
When fitted, this device compatible with the Nuova Micronette saves noticeably on water usage. It also maintains the water temperature between soaping and rinsing by allowing a small flow whilst the valve is turned off.





## Micronette Regal hair-wash shower

The Micronette Regal offers the same characteristics as the Nuova Micronette including the option of a smooth flow or light shower, anti hose kink and water saving function. However in this case the partial shut off valve is incorporated in the design and controlled by a trigger action which relieves pressure on the hose whilst maintaining the water temperature between soaping and rinsing. (Picture B)



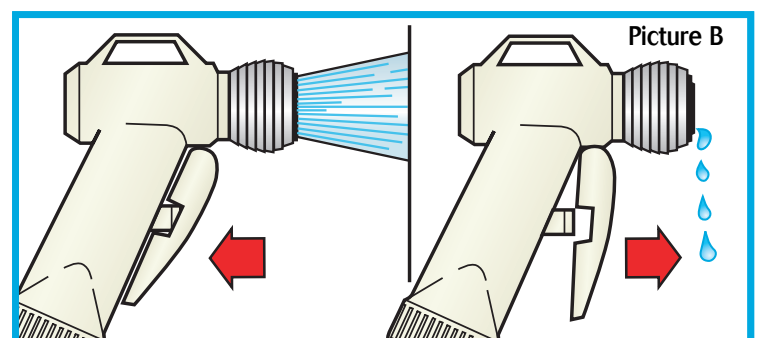
### Hair-wash shower (head only)

with 1/2" male connection - blister pack

This product comes complete with support for hanging after use. It can be used as a substitute for an existing shower head and will fit existing hoses.

Ref. 2040/S - black

Ref. 2040/2S - white



Screen-washer cleaning



## Micronette Hair-wash Showers

Thanks to their versatility of use they are available in various versions, to solve the different specific problems of the bathroom.



### Basin hair-wash shower

with 1,50 mt. PVC hose supplied with a universal rubber tap adaptor for the link to tap and equipped with support for hanging the shower after use.

Ref. 2715/S - black - Ref. 2010/S  
Ref. 2715/2S - white - Ref. 2010/2S



### Two-taps basin hair-wash shower

with 1,50 mt. PVC hose supplied with two universal rubber tap adaptors for the simultaneous link to the taps and equipped with support for hanging the shower after use.

Ref. 2725/S - black - Ref. 2020/S  
Ref. 2725/2S - white - Ref. 2020/2S



### Bath system hair-wash shower

supplied with 1,50 mt. PVC hose (with 1/2" female connection) and equipped with support for hanging the shower after use.

Ref. 2745/S - black - Ref. 2030/S  
Ref. 2745/2S - white - Ref.2030/2S





# KIT: hair-wash hand shower + shower head

## Nuova Micronette



Hair-wash shower with partial closure shut off valve supplied with 1,50 mts. PVC armed hose with anti twisting device and with support for hanging the shower after use  
+shower head  
+diverter.

Ref. 2750/S - black  
Ref. 2750/2S - white

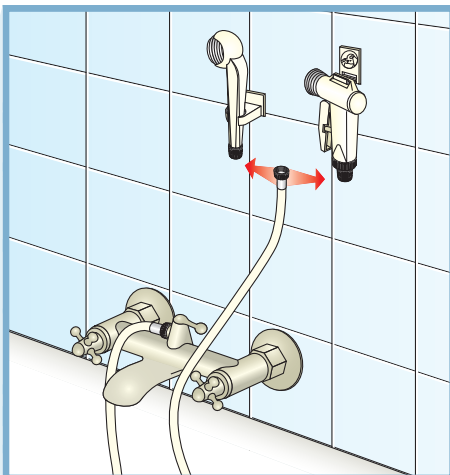
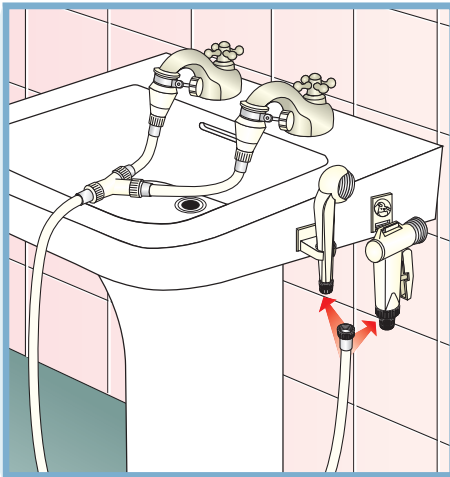
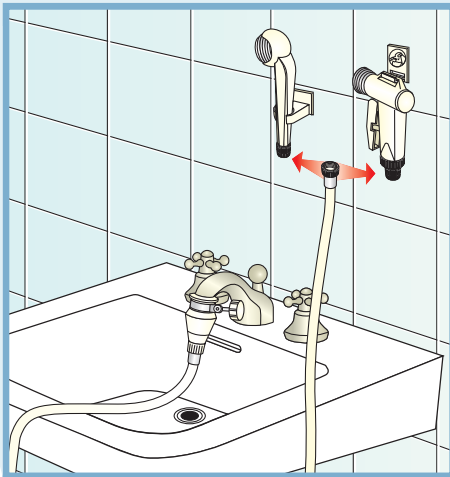
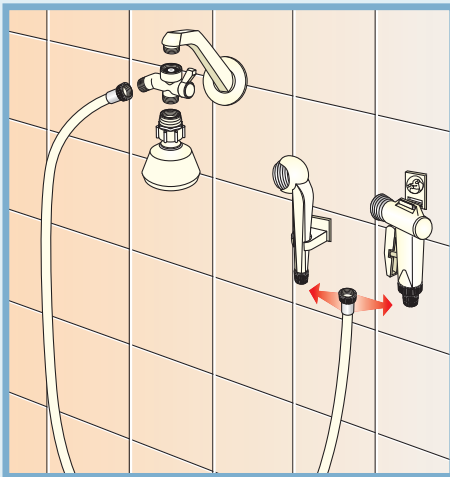


## Micronette Regal



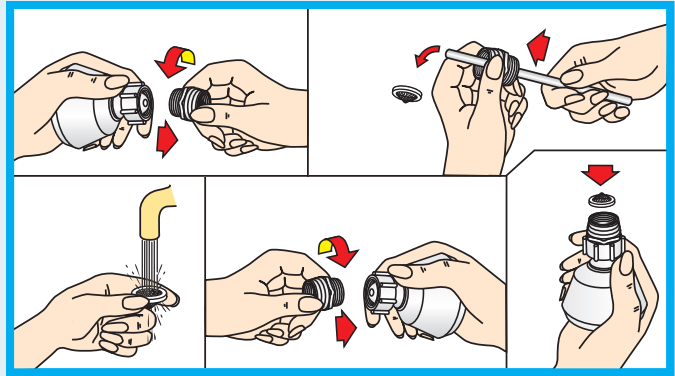
Hair-wash shower supplied with 1,50 mts. PVC armed hose with anti twisting device and with support for hanging the shower after use  
+shower head  
+diverter.

Ref. 2035/S - black  
Ref. 2035/2S - white





## Shower heads



Screen-washer cleaning

### with swivel and strainer

1/2" female connection - blister pack

Ref. 2760/S - black

Ref. 2760/2S - white

Ref. 2761/S - with built-in water saver - black

Ref. 2761/2S - with built-in water saver - white



## Shower hoses

1,50 mts. PVC hose with 2 POM (acetalic copolymer) 1/2" female nuts: for Nuova Micronette

Ref. 2745/10 - black Ref. 2745/12 - white

1,50 mts. PVC armed hose with 1 brass 1/2" female nut and 1 POM (acetalic copolymer) 1/2" female nut: for Micronette Regal

Ref. 2030/10 - black Ref. 2030/12 - white



## Total closure shut off valves

Ref. 2771 - 1/2"F. x 1/2"M. - black

Ref. 2772 - 1/2"F. x 1/2"M. - white

Ref. 2773 - 1/2"F. x 1/2"M. - chromed

Ref. 2773/5 - spherical tap

1/2"F. x 1/2"M. - chromed

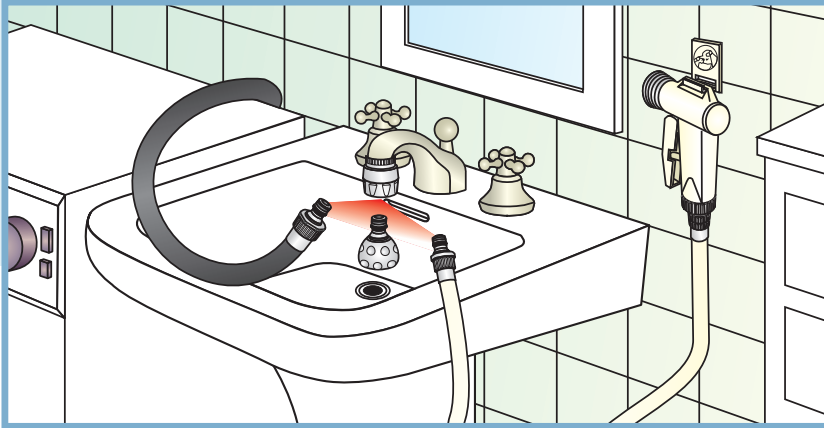
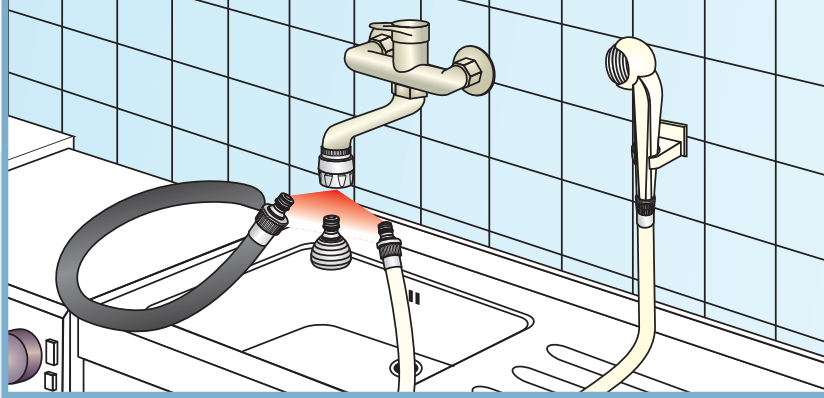


## Diverters

Ref. 2779 - 1/2"F. x 1/2"M. x 1/2"M. - chromed

Ref. 2779/1 - 1/2"F. x 1/2"M. x 1/2"M. - black

Ref. 2779/2 - 1/2"F. x 1/2"M. x 1/2"M. - white



## Quick connectors

They provide the easiest and most functional connection between the kitchen or bathroom mixer tap and

- a dishwasher or washing machine
- a hand or hair-wash shower

without affecting the functionality of the aerator-shower



**Ref. 2424 - black/chromed**  
with 22x1M female thread - brass  
equipped with:

- n. 1 - 1/2" male male coupling
- n. 1 - 22x1M male male coupling
- n. 1 - adapter 22x1M male - 24x1M male

**Ref. 2424/1** - as above **white/chromed**



**Ref. 2425 - black/chromed**  
with 22x1M female thread - brass  
equipped with:

- n. 1 - 3/4" male male coupling with valve
- n. 1 - 1/2" male male coupling
- n. 1 - 22x1M male male coupling
- n. 1 - adapter 22x1M male - 24x1M male

**Ref. 2425/1** - as above **white/chromed**



**Ref. 2426 - black/chromed**  
with 22x1M female thread - brass  
equipped with:

- n. 1 - 3/4" male male coupling with valve
- n. 1 - 1/2" male male coupling
- n. 1 - 22x1M male male coupling
- n. 1 - adapter 22x1M male - 24x1M male
- n. 1 - "aerator 2002"

**Ref. 2426/1** - as above **white/chromed**



**Ref. 2427 - black/chromed**  
with 22x1M female - brass  
equipped with:

- n. 1 - 3/4" male male coupling with valve
- n. 1 - 1/2" male male coupling
- n. 1 - 22x1M male male coupling
- n. 1 - adapter 22x1M male - 24x1M male
- n. 1 - "aerator-shower"

**Ref. 2427/1** - as above **white/chromed**



## Universal Water filters UNI 3

### Domestic equipment for treatment of drinkable waters

- They can be fitted to all kind of threaded and smooth taps
- They take little room and can be used very easily
- They incorporate a water-tap deviator which allows to filter only whenever necessary
- They are adjustable during filtering, according to one's need
- They are equipped with the well-known "aerator-shower" with swivel SIROFLEX

It, not only eliminates the solid impurities of the water by a mechanical filter (with synthetic net above 50 microns), but also absorbs and eliminates bad smells and tastes by making use of the **active carbon** (about 50 grs.) to obtain water suitable for drinking and cooking purposes at a low cost.

Particularly efficacious against the chlorine put in drinkable water, UNI3-A Water filter also absorbs, to a less extent, other components which are harmful to health.

The **active carbon** used in UNI3-A Water filter and its spare cartridges is added, according to law regulations, in order to avoid the formation of bacterial flora.

A **flow regulator** which is incorporated into the cartridge lets the optimum quantity of water flow thus exploiting the action of the active carbon to the utmost.

In fact, the slower the flow of the water is the more efficacious the action of the active carbon will be.

Ref. 2650/S - black

Ref. 2650/1S - white

### UNI 3-A



### Spare cartridges



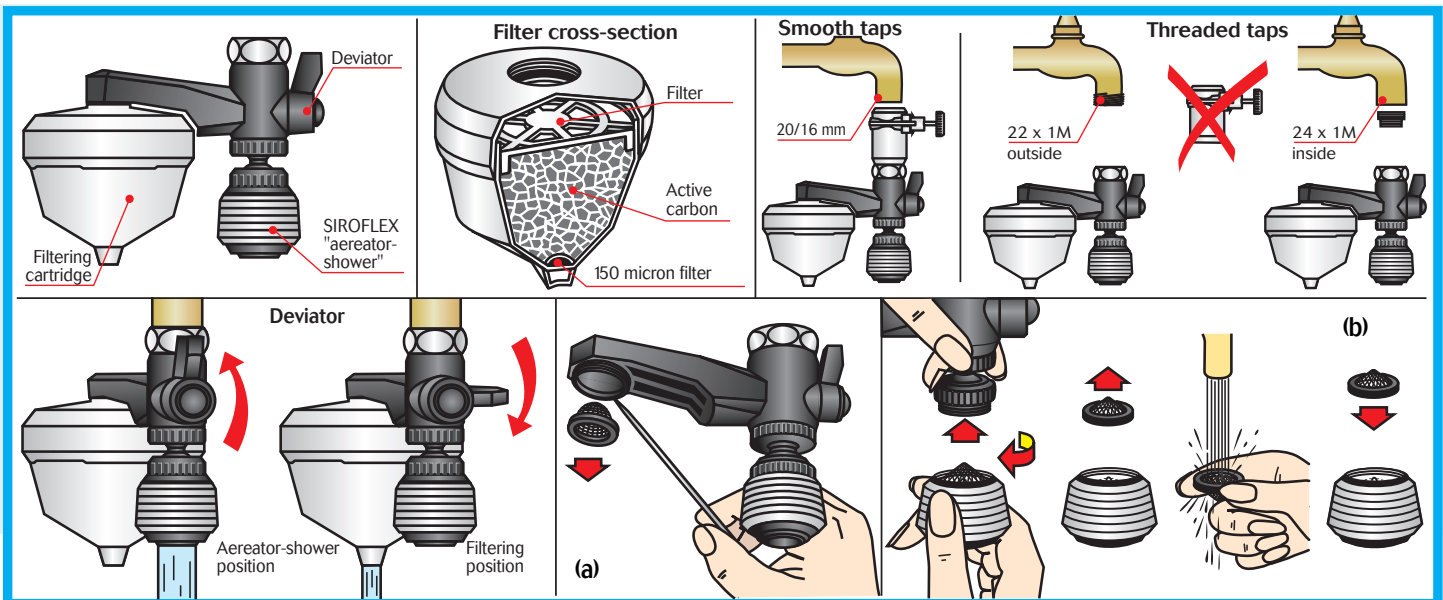
Ref. 2800/S  
n. 1 cartridge

Ref. 2800/4S  
n. 4 cartridges  
"One year's supply"



Ref. 2935  
dispenser/display UNI 3-A

Ref. 2935/1  
dispenser/display UNI 3-B



## UNI 3-B



This model specifically designed for hard water areas has, in addition to all the standard features of the UNI3-A, a special water softening agent made from a blend of active carbon and resin which helps to eradicate limescale.

This model is less effective against chlorine.

The top part of UNI3-B water filter's cartridges comes in a light blue colour so to distinguish them from UNI3-A's.

### ADVICE

It is advisable to clean the protective steel wire gauze filter whenever filtrating cartridges are substituted. (a) Siroflex aerator-shower is equipped with a steel wire gauze filter which retains the solid water impurities and guarantees almost unlimitedly its functionality and endurance: it is sufficient to clean it periodically. (b)

Ref. 2655/S - black

Ref. 2655/1S - white

## Spare cartridges



Ref. 2805/S  
n. 1 cartridge

Ref. 2805/4S  
n. 4 cartridges  
"One year's supply"

### LIFE SPAN

The life of the filtrating cartridges is obviously related to the characteristics and quantity of the water we want to filter and should **not exceed 3 months in any case.**

# Household gadgets

## Blister packed items



**Ref. 3051/2S** - door stopper ivory - n. 2 pieces.

**Ref. 3056/2S** - door stopper brown - n. 2 pieces.



**Ref. 3071/4S** - clothes line clamp  
n. 4 pieces



**Ref. 3080/4S** - mineral water and beer bottle stopper  
n. 4 pieces



**Ref. 3090/2S** - wine bottle stopper  
n. 2 pieces

**Ref. 3090/4S** - wine bottle stopper  
n. 4 pieces



**Ref. 3111/4S** - dish towel clip white - n. 4 pieces

**Ref. 3118/4S** - dish towel clip red - n. 4 pieces



**Ref. 3121/4S** - broom holder white - n. 4 pieces

**Ref. 3128/4S** - broom holder red - n. 4 pieces



**Counter display box**

**Ref. 3090** - wine bottle stopper  
n. 56 pieces

## Single packaging





**Ref. 3000**

175 x 50 cms. stand  
supplied with:

- n. 10 - Ref.3051/2S
- n. 10 - Ref.3056/2S
- n. 25 - Ref.3071/4S
- n. 25 - Ref.3080/4S
- n. 25 - Ref.3090/2S
- n. 25 - Ref.3111/4S
- n. 25 - Ref.3118/4S
- n. 25 - Ref.3121/4S
- n. 25 - Ref.3128/4S
- n. 25 - Ref.3131/4S
- n. 25 - Ref.3138/4S
- n. 50 - Ref.2200/S
- n. 25 - Ref.2200/2S
- n. 25 - Ref.2210/S
- n. 25 - Ref.2220/S
- n. 20 - Ref.3301/S
- n. 10 - Ref.3321/8S
- n. 10 - Ref.3328/1S



**Ref. 3131/4S** - multiuse hook  
white - n. 4 pieces

**Ref. 3138/4S** - multiuse hook  
red - n. 4 pieces



**Ref. 3200/S** - active carbon  
smell absorber for refrigerator  
*(discontinued)*



**Ref. 3210/S** - active carbon  
smell absorber for shoe rack  
*(discontinued)*

**Ref. 3215/S** - smell absorber  
spare cartridge for shoe rack  
*(discontinued)*



**Ref. 3220/S** - mouth  
repellent with support  
*(discontinued)*

**Ref. 3225/S** - mouth  
repellent spare cartridge  
*(discontinued)*



**Ref. 2200/S** - chromed sink strainer

**Ref. 2200/2S** - chromed sink strainer  
n. 2 pieces

**Ref. 2201/S** - white sink strainer

**Ref. 2201/2S** - white sink strainer  
n. 2 pieces



**Ref. 2210/S** - chromed wash-basin strainer

**Ref. 2210/2S** - chromed wash-basin strainer  
n. 2 pieces

**Ref. 2211/S** - white wash-basin strainer

**Ref. 2211/2S** - white wash-basin strainer  
n. 2 pieces

**Ref. 2220/S** - sink+wash-basin strainers,  
chromed

**Ref. 2221/S** - sink+wash-basin strainers, white



**Ref. 3301/S** - bottle coaster  
white

**Ref. 3321/8S** - bottle coaster  
(white-red) + 2 stoppers

**Ref. 3328/1S** - bottle coaster  
(red-white) + 2 stoppers





**SIROFLEX** 